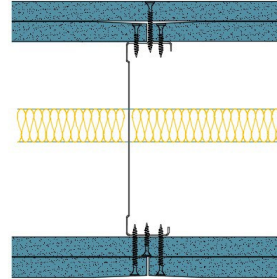


## 146-K-60(25) - SPEEDLINE System Data Sheet - Version V1 (24-10-23)

SPEEDLINE 146mm 'C' Stud Partition @600mm Ctrs, with 2x Knauf 15mm Soundshield Plus each side, 25mm APR



### System Performance Breakdown

Fire Resistance:

BS476 Part 22:1987:

Test Ref & Date or Applied Ref & Report:

Max Height:

Thickness:

Duty Grade: BS 5234: Part 2:1992:

Sound Insulation:

**120/120 Minutes** (Integrity/Insulation).

**BMT/FEP/F14077 - BRE Report P102396-1011B**

**Refer to Speedline Specification Clause**

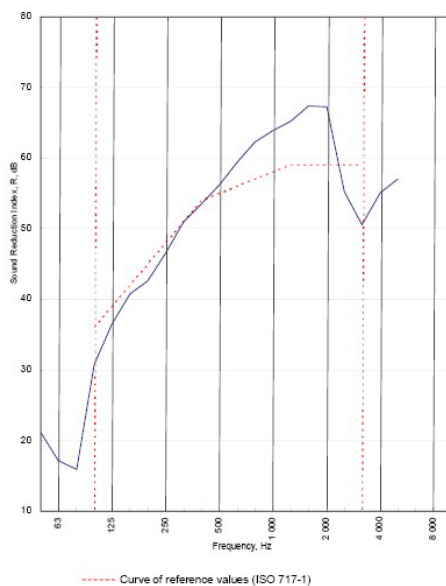
**208 mm.** (At Base Track, Excluding Finishes)

**Severe - Annexes A-F**

**55  $R_w$ dB**, Date Tested or Assessed Against - 70-K-59(25)

Test Code:  
H17427AA  
Test Date:  
27/06/2011

Freq. Hz	R dB
50	21.1
63	17.1
80	15.9
100	30.8
125	36.5
160	40.8
200	42.6
250	46.5
315	51.0
400	53.5
500	56.2
630	59.4
800	62.3
1 000	63.9
1 250	65.2
1 600	67.4
2 000	67.3
2 500	55.2
3 150	50.6
4 000	55.1
5 000	57.0
6 300	
8 000	
10 000	



Rating according to BS EN ISO 717-1:1997	<b><math>R_w</math> (C;Ctr) = 55 (-2;-7) dB</b>		
	Max dev. 8.4 dB at 3 150 Hz		
Evaluation based on laboratory measurement results obtained by an engineering method:	$C_{50-500} = -9$ dB	$C_{50-500} = -8$ dB	$C_{100-500} = -1$ dB
	$C_{9-50-315} = -20$ dB	$C_{50-500} = -20$ dB	$C_{50-500} = -7$ dB

TESTED AT ONE OF THE UKAS ACCREDITED LABORATORIES BELOW

B.T.C  
(H-Ref on Graph)

B.R.E

AIRO

S.R.L

Customer: Metsec plc Hepsec Division

BTC 17427A: Page 9 of 11



SPEEDLINE Drywall Systems, Adsetts House, 16 Europa View, Sheffield Business Park, Sheffield, S9 1XH.

Tel: 0114 231 8030.

Email: [enquiries@speedlinedrywall.co.uk](mailto:enquiries@speedlinedrywall.co.uk)

(As per the requirements set out in ISO/IEC 17025:2017 regarding test data the results stated have been carried out by voestalpine Metsec plc as part of the contract to supply Speedline Metal Sections to SIG Plc)